

DEVELOP

Dynamic balance

www.develop.eu



Want to make it
your
own device?

OFFICE PRODUCTS



Choose DEVELOP

Every industry faces different challenges. Every business has different needs. Yours is no exception. At DEVELOP we are focused on meeting your specific document production and management demands – no matter whether you're a start-up, small business or mid-sized company. We do this by providing multifunctional office devices that can be customised to your specific requirements. Discover the benefits you enjoy with DEVELOP.

Wouldn't it be great to enjoy optimal **ease of use**?

We offer you solutions that adapt to your daily working habits and save a lot of time in routine office tasks like printing, scanning or copying. You can customise the individual screen features, specific functions and workflows to be activated via your ineo device's display. Frequently used functions can be placed on your start screen while functions you don't use can simply be removed.

Ever dreamed of using a personally **customised device**?

You can now make your ineo device a true part of your business. Start with your own company logo, display a Flash video when the display is idle, customise your user interface on the screen, and have your business-relevant apps accessed straight from the operating panel.

Useful apps, remote app updates, connectors to cloud solutions such as Google Drive or Google Mail, paper templates – just about everything you need to improve your business processes is available from DEVELOP's dstore.

www.dstore.develop.eu

Want to enjoy more **mobility** at work?

More and more businesses are transforming their offices into mobile workplaces. Employees enjoy the flexibility of working where they want, yet still need to stay connected. DEVELOP makes printing from a mobile device even easier and more intuitive than from a PC. You don't even need to download external apps or install a specific printer driver – our mobile features integrate seamlessly with innovative mobile technologies to let you print from your tablet or smartphone with just one click. Our security functionality ensures your data are safe, and on most ineo devices, access to safety features like secure print, user authentication and account tracking comes with the free app ineoPRINT.

ineoPRINT

The free ineoPRINT app connects iOS or Android devices to ineo systems, for intuitive printing and scanning.

With ineoPRINT, documents can be printed from, or scanned to the main cloud storage platforms, bringing the documents to your hand anytime you need them.

Download the free ineoPRINT app directly from the AppStore or Google Play Store.





Wouldn't you like to optimise your **workflow integration**?

It's easier than you might think. Our devices can easily be integrated into any existing network and help to optimise document workflows – with integrated device functionalities or professional solutions working hand in hand with our systems, e.g. the DEVELOP apps convert+share and store+find. Besides, DEVELOP offers remote monitoring of your printer fleet and helps reduce inefficiency in fleet management. Why not let our know-how optimise your workflow processes!

Still worrying about **data security**?

In today's business environment company data have to cross a lot of different data highways, and much of your corporate data runs through your multifunctional system(s). DEVELOP ensures your data stay safe and no document ends up in the wrong hands. Thanks to the Common Criteria/ISO 15408 IEEE 2600.1 certification, access control, data security and network encryption you can be sure your data stay where they belong – in the right hands!

www.dstore.develop.eu

DEVELOP's software solutions replace time-consuming manual operations with automated processes:

convert+share

Scan a document in various file formats, then send the file straight to whatever destination you want, e.g. Google Drive, Evernote or Microsoft SharePoint.

store+find

Locate any document easily and quickly via a keyword or full-text search facility. Store documents in a very wide range of file formats. And simply add electronic documents to store+find, or import them direct from MS Office.

ineo connector apps

Three custom-developed apps connect ineo office systems to the most popular cloud services Google Apps™, Evernote™ and Microsoft SharePoint™. These apps support the mobility and flexibility demanded in modern-day offices.



ineo Navigator

Want a quick overview of the different functions of your ineo system(s)? Join the free online learning platform ineoNavigator and get to know your ineo device(s) fast. Printing, scanning, copying and faxing – the usage explanations are clearly structured and flexible.

Benefits

- > Free of charge
- > Access at any time and as long as needed
- > No dependency on hotlines
- > No external instructor required
- > No unproductive waiting time

www.ineo-navigator.develop.eu



Wouldn't **great design** liven up your office?

DEVELOP systems not only make an impression with their high quality and reliability, but also their cool design. There is bound to be high spirits in your office! Whether you choose one of the fashionable designs that are ready to make your office even more attractive, or if you create your own ineo decor that perfectly matches to your environment. Contact your DEVELOP partner and discover the ineo decors.

Know the benefits **green efficiency** brings your business?

Our planet's survival depends on how we care for the environment today. As a company we are proud of our ISO 14001 environmental certification and production facilities that work to the zero-waste principle. But even more importantly for you, all our office devices are environment-friendly, e.g. with recyclable components and energy-saving features to reduce power consumption. ENERGY STAR and Blue Angel awards are proof of their environmental friendliness. And that means a better carbon footprint for your business and money saved through lower electricity bills.

Keen to **cut costs**?

Ease of use, customisation, green efficiency, optimised document processes: what do all these benefits have in common? They save your staff time and effort, and your business money. To cut your document production and management costs all you have to do is invest in a DEVELOP device.



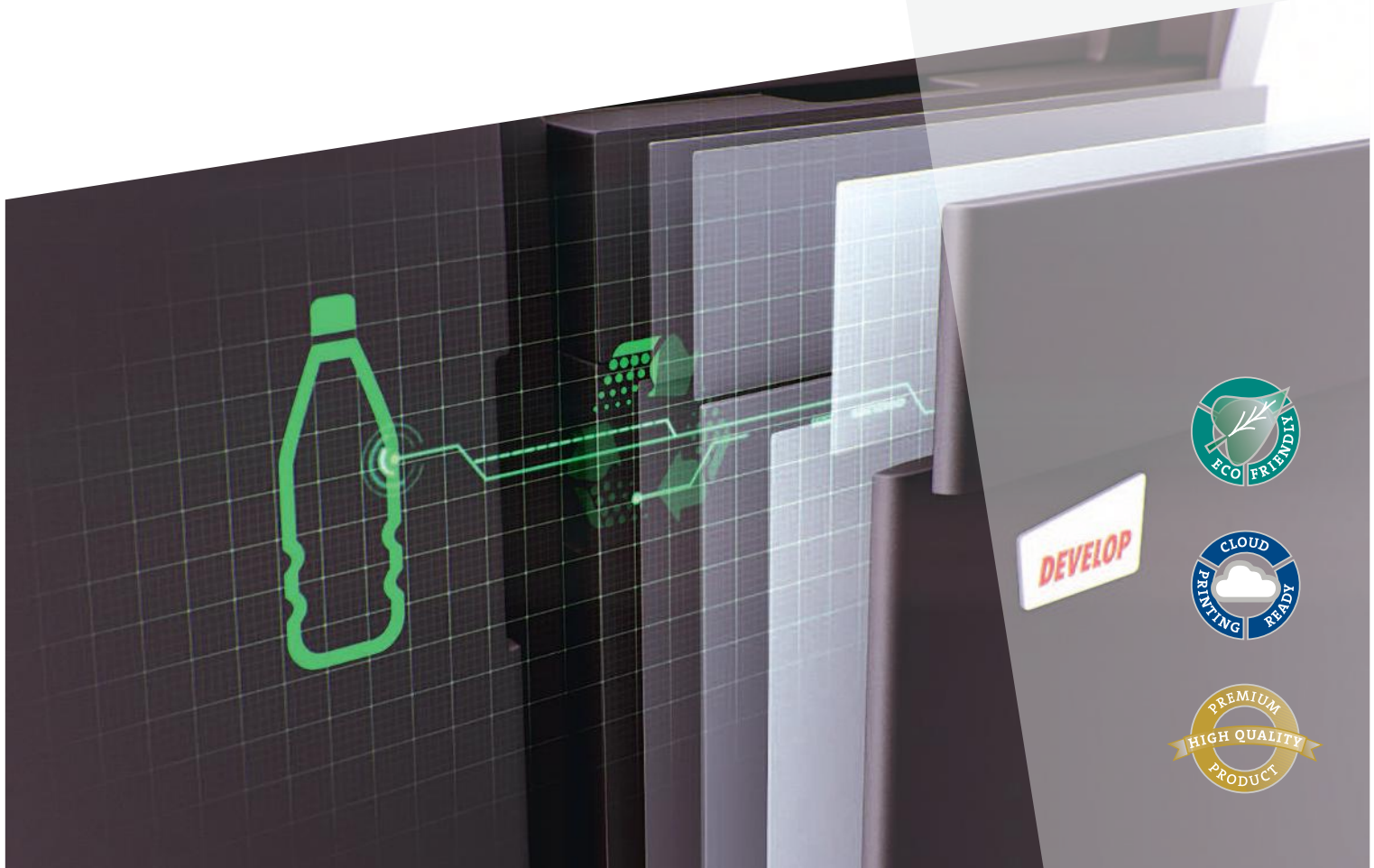
> ENERGY STAR

As part of an energy-saving programme for office equipment, products that meet specific standards can be registered as ENERGY STAR devices. In particular, the devices power down when not in use to save electricity. All new DEVELOP devices are ENERGY STAR-qualified.



> Blue Angel

Since 1978, the Blue Angel seal has been awarded to environment-friendly products. Blue Angel evaluates a product's energy consumption, noise emissions and recyclability. Since energy consumption is directly related to CO₂ emissions, a crucial greenhouse gas, Blue Angel devices are helping to reduce CO₂ emissions. DEVELOP has continued to receive certification for new products by clearing the certification bar each time it has been raised.



DEVELOP

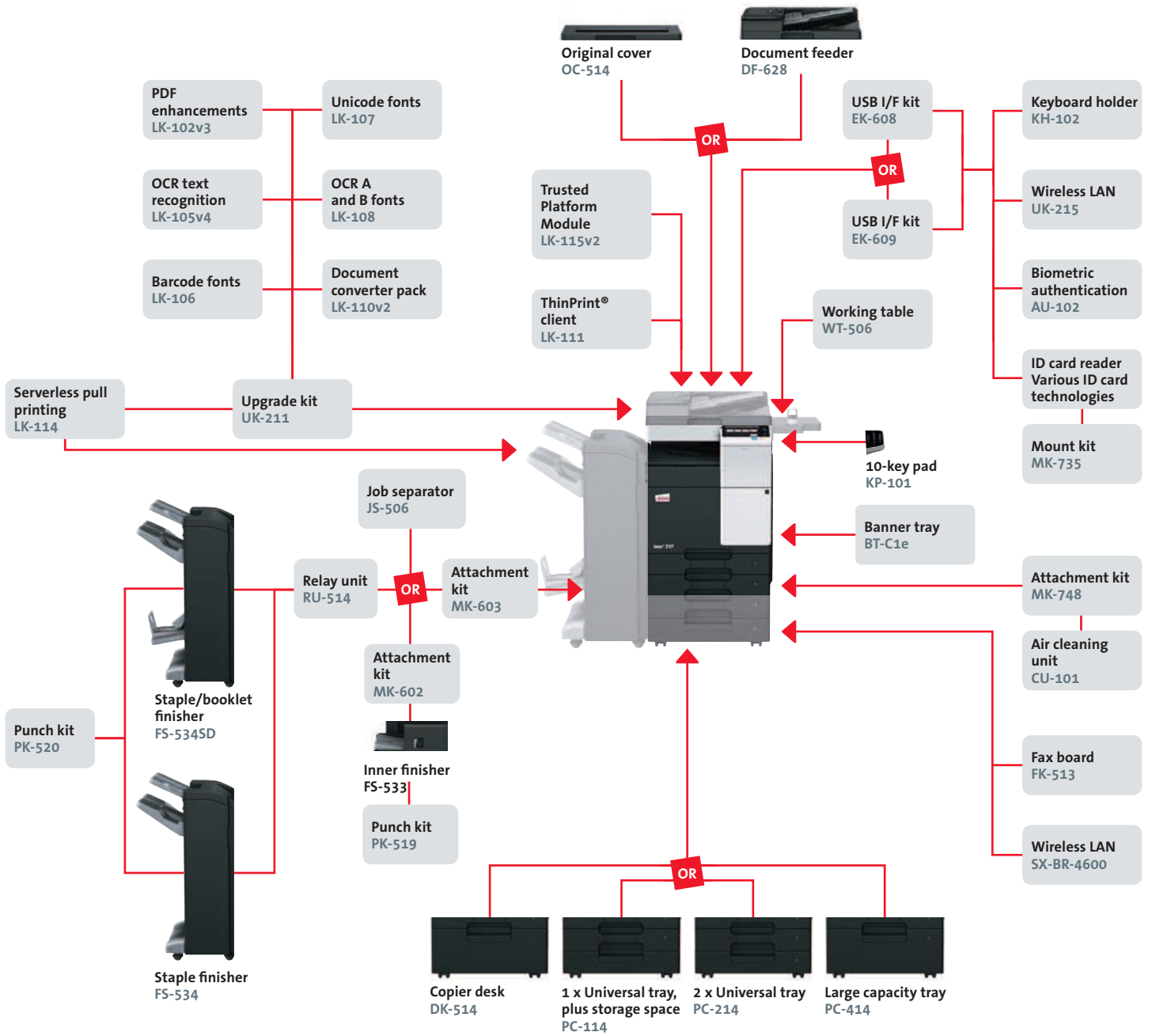
Dynamic balance

www.develop.eu

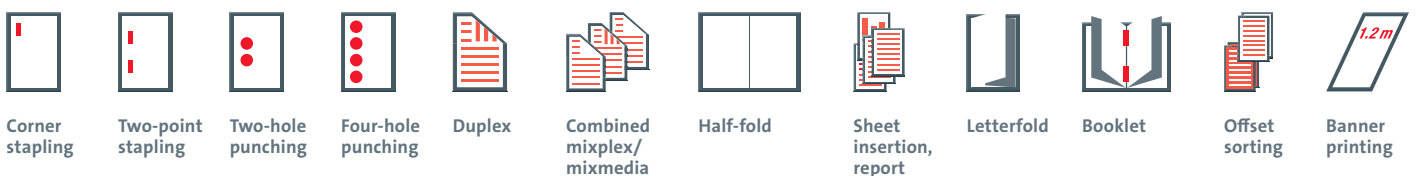


ineo+ 227

- > Colour
A3 multifunctional
- > Up to 22 ppm



Finishing functionalities



ineo+ 227

A3 multifunctional with 22 ppm b/w and colour. Standard ineo print controller with PCL 6, PCL 5c, PostScript 3, PDF 1.4, XPS and OOXML support. Paper capacity of 500 + 500 sheets and 100-sheet manual bypass. Media from A6 to A3, 1.2 m banner and 60–256 g/m². 2 GB memory, 250 GB hard disk and Gigabit Ethernet standard.

DF-628 Document feeder	Reversing automatic document feeder, capacity 100 originals
OC-514 Original cover	Cover instead of ADF
PC-114 1 x Universal tray	A5–A3, 500 sheets, 60–256 g/m ²
PC-214 2 x Universal tray	A5–A3, 2 x 500 sheets, 60–256 g/m ²
PC-414 Large capacity tray	A4, 2,500 sheets, 60–256 g/m ²
DK-514 Copier desk	Provides storage space for print media and other materials
MK-602 Attachment kit	For FS-533 installation
MK-603 Attachment kit	For FS-533, FS-534/SD, JS-506 installation
FS-533 Inner finisher	50-sheet stapling, 500 sheets max. output
PK-519 Punch kit for FS-533	2/4 hole punching, autoswitching
FS-534 Staple finisher	50-sheet stapling, 3,200 sheets max. output
FS-534SD Booklet finisher	50-sheet staple finisher, 20-sheet booklet finisher, 2,200 sheets max. output
RU-514 Relay unit for FS-534	For FS-534 installation (Max. 100 sheets output capacity)
PK-520 Punch kit for FS-534/SD	2/4 hole punching, autoswitching
JS-506 Job separator	Separation for fax output etc.
KP-101 10-key pad	For use instead of touchscreen

WT-506 Working table	Authentication device placement
FK-513 Fax board	G3 fax, digital fax functionality
KH-102 Keyboard holder	To place USB keyboard
EK-608 USB I/F kit	USB keyboard connection
EK-609 USB I/F kit	USB keyboard connection, Bluetooth
ID card reader	Various ID card technologies
MK-735 Mount kit	Installation kit for ID card reader
AU-102	Finger vein scanner
Biometric authentication	
LK-102v3	PDF/A, PDF encryption, digital signature
PDF enhancements	
LK-105v4	Searchable PDF and PPTX, PDF/A (1a)
OCR text recognition	
LK-106 Barcode fonts	Supports native barcode printing
LK-107 Unicode fonts	Supports native Unicode printing
LK-108 OCR A and B fonts	Supports native OCR A and B font printing
LK-110v2	Generates various file formats incl. DOCX, XLSX and PDF/A
Document converter pack	
LK-111 ThinPrint® Client	Print data compression for reduced network impact
LK-114 Serverless pull printing	Secure and Follow Me printing solution requiring no server application. Host devices require 4GB memory.
LK-115v2	Trusted Platform Module for protection of data encryption and decryption
TPM activation	
UK-211 Upgrade kit	2 GB memory extension for upgrades
UK-215 Wireless LAN	Wireless LAN and wireless LAN Access Point Mode
SX-BR-4600 Wireless LAN	Wireless LAN to network connector
MK-748 Attachment kit	Installation kit for CU-101
CU-101 Air cleaning unit	Improves indoor air quality by reducing emissions
BT-C1e Banner tray	Multipage banner feeding

Technical specifications

SYSTEM SPECIFICATIONS

Panel size/resolution	7" / 800 x 480
System memory	2,048 MB (standard)
System hard disk	250 GB (standard)
Interface	10-Base-T/100-Base-T/1,000-Base-T Ethernet; USB 2.0; Wi-Fi 802.11b/g/n (optional)
Network protocols	TCP/IP (IPv4/IPv6), FTP, SMB; SMTP, WebDAV
Frame types	Ethernet 802.2; Ethernet 802.3; Ethernet II; Ethernet SNAP
Automatic document feeder	Up to 100 originals; A6–A3; 35–128 g/m ² RADF optional available
Printable paper size	A5–A3; A6S; banner paper, max. 1,200 x 297 mm
Printable paper weight	60–256 g/m ²
Paper input capacity	Standard: 1,100 sheets Max.: 3,600 sheets
Tray 1	500 sheets; A5–A4; 60–256 g/m ²
Tray 2	500 sheets; A5–A3; 60–256 g/m ²
Tray 3 (optional)	500 sheets; A5–A3; 60–256 g/m ²
Tray 4 (optional)	2 x 500 sheets; A5–A3; 60–256 g/m ²
Large capacity tray (optional)	2,500 sheets; A4; 60–256 g/m ²
Manual bypass	100 sheets; A6–A3; custom sizes; banner; 60–256 g/m ²
Automatic duplexing	A5–A3; 60–256 g/m ²
Finishing modes (optional)	Offset; group; sort; staple; punch; half-fold; letter fold; booklet
Output capacity (with finisher)	Max.: 3,300 sheets
Output capacity (without finisher)	Max.: 250 sheets
Stapling	Max.: 50 sheets or 48 sheets + 2 cover sheets (up to 209 g/m ²)
Stapling output capacity	Max.: 1,000 sheets
Letter fold	Up to 3 sheets
Letter fold capacity	Max.: 30 sheets (tray); unlimited
Booklet	Max.: 20 sheets or 19 sheets + 1 cover sheet (up to 209 g/m ²)
Booklet output capacity	Max.: 100 sheets (tray); unlimited
Copy/print volume (monthly)	Rec.: 10,000 pages Max. ⁽¹⁾ : 19,000 pages

Toner lifetime	Black: 24,000 pages; CMY: 21,000 pages
Imaging unit lifetime	Black: 80,000 pages/600,000 pages (Drum/Developer); CMY: 70,000 pages (Imaging unit)
Power consumption	220–240 V / 50/60 Hz; less than 1.6 kW (system)
System dimensions (W x D x H)	585 x 660 x 787 mm (standard configuration of main body)
System weight	Approx. 72 kg (without options/toner)

COPIER SPECIFICATIONS

Copying process	Electrostatic laser copy; indirect
Toner system	HD polymerised toner
Copy/print speed A4	Up to 22 ppm
Copy/print speed A3	Up to 14 ppm
Autoduplex speed A4	Up to 22 ppm
1st copy out time (mono/colour)	6.8/8.4 sec.
Warm-up time	Approx. 20 sec. ⁽²⁾
Copy resolution	600 x 600 dpi
Gradation	256 gradations
Multicopy	1–9,999
Original format	A5–A3
Magnification	25–400% in 0.1% steps; auto-zooming
Copy functions	Chapter; cover and page insertion; proof copy; adjustment test print; job setting memory; poster mode; image repeat; overlay (optional; with UK-211); stamping; copy protection

¹ If the maximum volume is reached within a period of one year, then a maintenance cycle must be performed.

² Warm up time may vary depending on the operating environment and usage

PRINTER SPECIFICATIONS

Print resolution	1,800 (equivalent) x 600 dpi
Page description language	PCL 6 (PCL 5c + XL 3.0); PostScript 3 (CPSI 3016); XPS
Operating systems	Windows 7 (32/64); Windows 8 (32/64); Windows 8.1 (32/64); Windows 10 (32/64); Windows Server 2008/2008 R2 (32/64); Windows Server 2012/2012 R2 (64); Windows Server 2016; Macintosh OS X 10.9 or later; Linux
Printer fonts	80 PCL Latin; 137 PostScript 3 Emulation Latin
Print functions	Direct print of PCL; PS; TIFF; XPS; PDF (v1.4); encrypted PDF files and OOXML (DOCX; XLSX; PPTX); mixmedia and mixplex; "Easy Set" job programming; overlay; watermark; carbon copy print, copy protection
Mobile Printing	AirPrint (iOS); Mopria (Android); Google Cloud Print (optional); WiFi Direct (optional); ineoPRINT (iOS/ Android); NFC Authentication and Pairing (Android)

SCANNER SPECIFICATIONS

Scan speed (with optional document feeder) (mono/colour)	Up to 45 ipm
Scan resolution	Max.: 600 x 600 dpi
Scan modes	Scan-to-E-mail (Scan-to-Me); Scan-to-SMB (Scan-to-Home); Scan-to-FTP; Scan-to-Box; Scan-to-USB; Scan-to-WebDAV; Scan-to-DPWS; Network TWAIN scan
File formats	TIFF; PDF; Compact PDF; JPEG; XPS; Compact XPS Optional: DOCX; XLSX; PDF/A; searchable PDF; linearised PDF
Scan destinations	2,100 (single + group); LDAP support
Scan functions	Annotation (text/time/date) for PDF; up to 400 job programs; Realtime scan preview

FAX SPECIFICATIONS

Fax standard	G3 (optional)
Fax transmission	Analogue; i-Fax; Colour i-Fax; IP-Fax
Fax resolution	Max.: 600 x 600 dpi (ultra-fine)
Fax compression	MH; MR; MMR; JBIG
Fax modem	Up to 33.6 Kbps
Fax destinations	2,100 (single + group)
Fax functions	Polling; time shift; PC-Fax; receipt to confidential box; Receipt to E-mail/FTP/SMB; up to 400 job programs

USER BOX SPECIFICATIONS

Max. storable documents	Up to 3,000 documents or 10,000 pages
Type of user boxes	Public; Personal (with password or authentication); Group (with authentication)
Type of system boxes	Secure print; Encrypted PDF print; Fax receipt; Fax polling
User box functionality	Reprint; Combination; Download; Sending (E-mail/FTP/SMB and fax); Copy box to box

SYSTEM FEATURES

Security	ISO15408 Common Criteria; IP filtering and port blocking; SSL2; SSL3 and TLS1.0 network communi- cation; IPsec support; IEEE 802.1x support; user authentication; Authentication log; secure print; Kerberos; Hard disk overwrite (8 standard types); Hard disk data encryption (AES 256); Memory data auto deletion; Confidential fax receipt; Print user data encryption; copy protection
Accounting	Up to 1,000 user accounts; Active Directory support (user name + password + E-mail + smb folder); User function access definition; Biometric authentication (finger vein scanner) optional; ID card authentication (ID card reader) optional
Software	store+find (opt.); convert+share (opt.); Personal Applications (opt.); Enterprise Suite (opt.); Data Administrator (user accounts & cost centres); Card solutions (opt.); Unix/Linux support; SAP support; EveryonePrint (opt.); PCounter (opt.); Web Connection



DEVELOP

Konica Minolta Business Solutions Europe GmbH
Europaallee 17 30855 Langenhagen Germany Phone +49 511 7404-0 www.develop.eu

For more information regarding the ineo+ 227
please refer to the respective product homepage



- All specifications refer to A4-size paper of 80 g/m² quality.
- The support and availability of the listed specifications and functionalities varies depending on operating systems, applications and network protocols as well as network and system configurations.
- The stated life expectancy of each consumable is based on specific operating conditions such as page coverage for a particular page size (5% coverage of A4). The actual life of each consumable will vary depending on use and other printing variables including page coverage, page size, media type, continuous or intermittent printing, ambient temperature and humidity.
- Specifications and accessories are based on the information available at the time of printing and are subject to change without notice.
- DEVELOP and ineo are registered trademarks/product titles owned by Konica Minolta Business Solutions Europe GmbH.
- Konica Minolta does not warrant that any specifications mentioned will be error-free.
- All brand and product names may be registered trademarks or trademarks of their respective holders and are hereby acknowledged.

